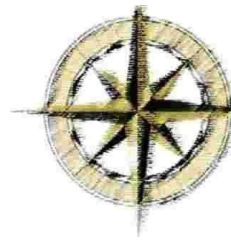


Compass PITs



BGSE
Group

BGSE GROUP LLC
14034 Clarendon Point Court
Huntersville, NC 28078
United States of America
+1 (704) 488-0084
sales@bgsegroup.com

BGSE GROUP's Linear actuator

powered Pop-Up PIT



**Most Reliable, Safest, Zero
Maintenance, Remotely
Actuated PIT in the world!**



COMPASS
Aviation Service Pits

A Comparison of Technologies

Compass PITs

The BGSE PIT tops are 100% aluminum machined

1. Won't rust
2. Superior finish
3. Lighter



Others



The competitor's Pits are made of steel that rusts and layered with Treadbright to mask the corrosion.

1. Rust shavings contact the Treadbright and cause rusting
2. Having two different metals in contact causes corrosion
3. The steel tops are very heavy

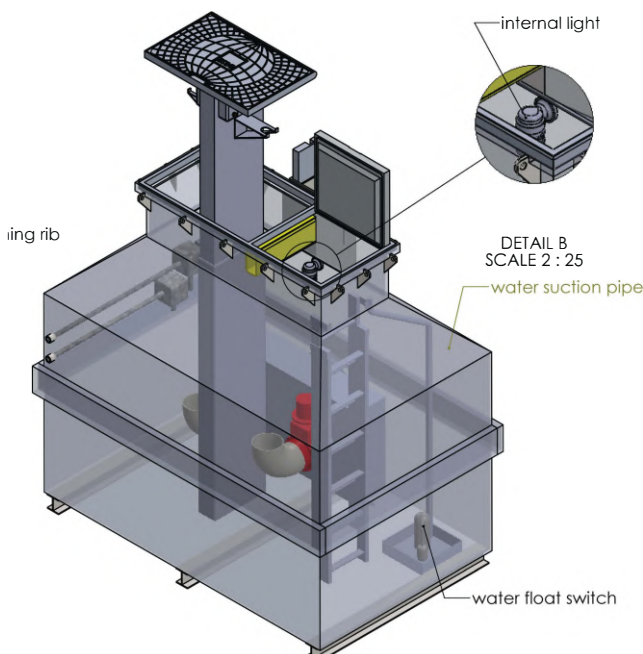
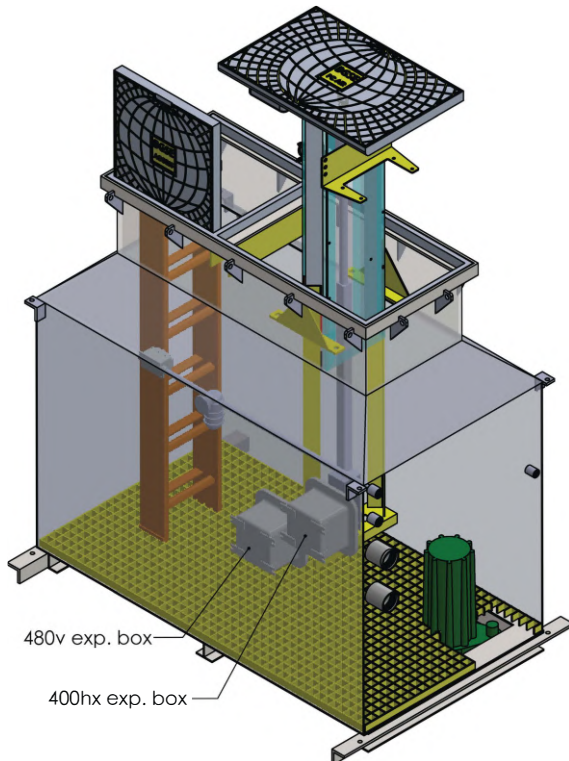


Compass PITS

B GSE Group provides drawings to scale.

EZ Access PITS with powered pop-ups
Superior to manual actuation, let the pit do the work for you

***No lifting or pushing, no broken or smashed fingers and no back injuries with BGSE hydraulic or actuated designs



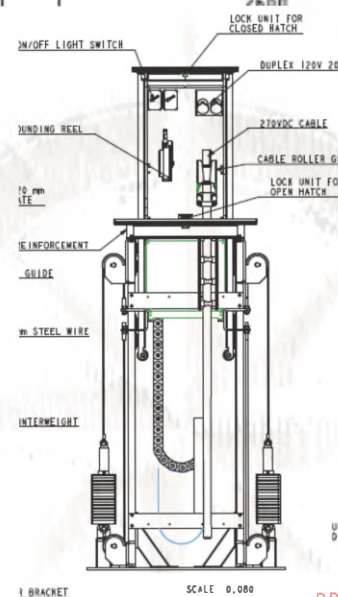
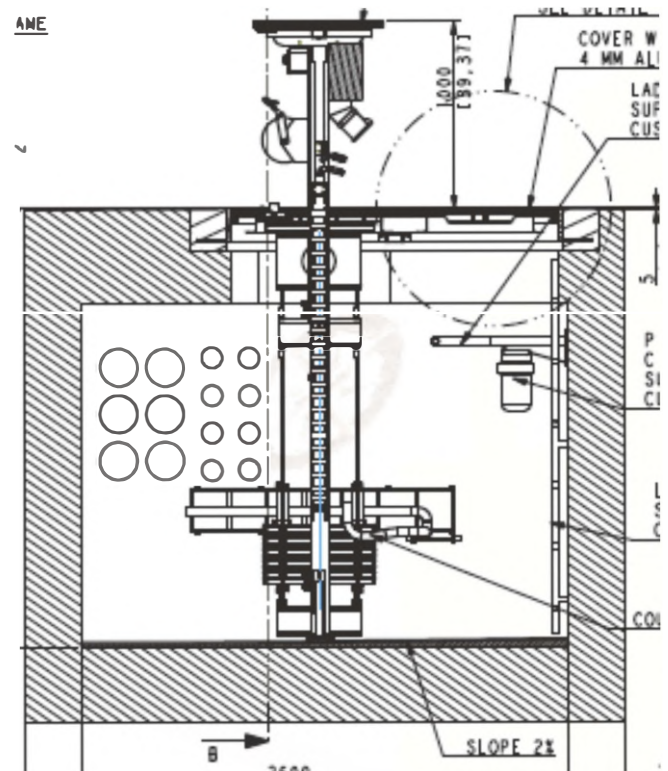
Others



Others do not provide drawings to scale.

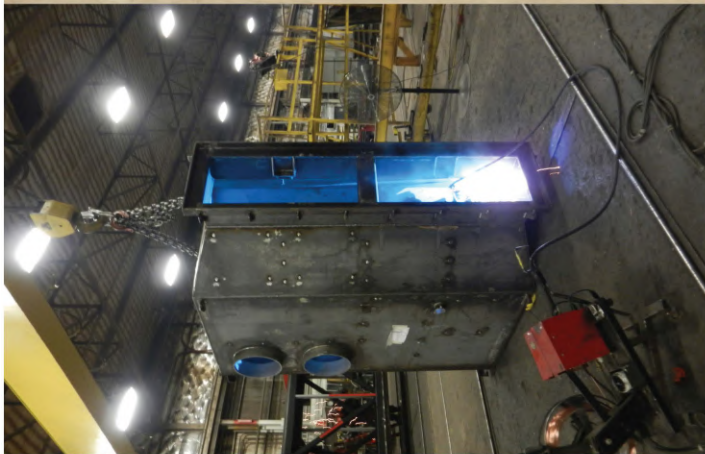
Pop-up, well sometimes! Depends if you have enough counter weights and how strong you are to pull up on 30 pounds or more weight.

*** When closing, put your weight on it and be careful!
The heavy steel tops can break toes and fingers.



Compass PITS

F900 & EN124 load rated. What does this mean? It means that the PIT structure cannot bend or break under loads of 90-tons. BGSE rates all of their tops for this load, but it doesn't stop there. The rating must continue to the collar of the Pit since this is the point the load is transferred into the earth. BGSE PITS are the only correctly engineered Pits to be fully load rated at 90-tons.



Others

The others may or may not have hatches that are properly rated to F900, but even if they do that is where the load certification stops. In almost every design these hatches are suspended over to a square wall support. The structure that bridges the gap and suspends the hatches over the Pits ARE NOT certified for the loads of F900. Certified hatches are absolutely useless and unsafe if held up by a structure that can fail under the same load requirement.

